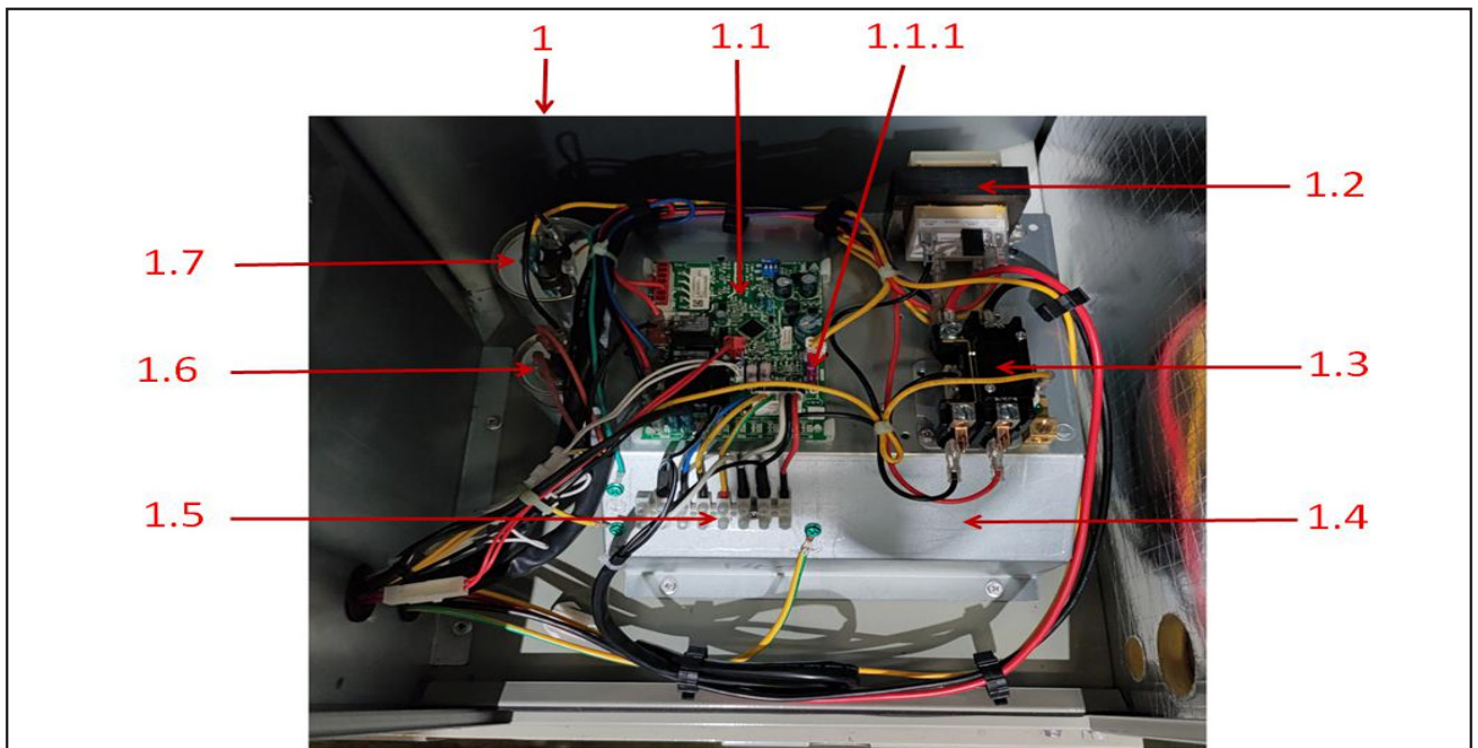
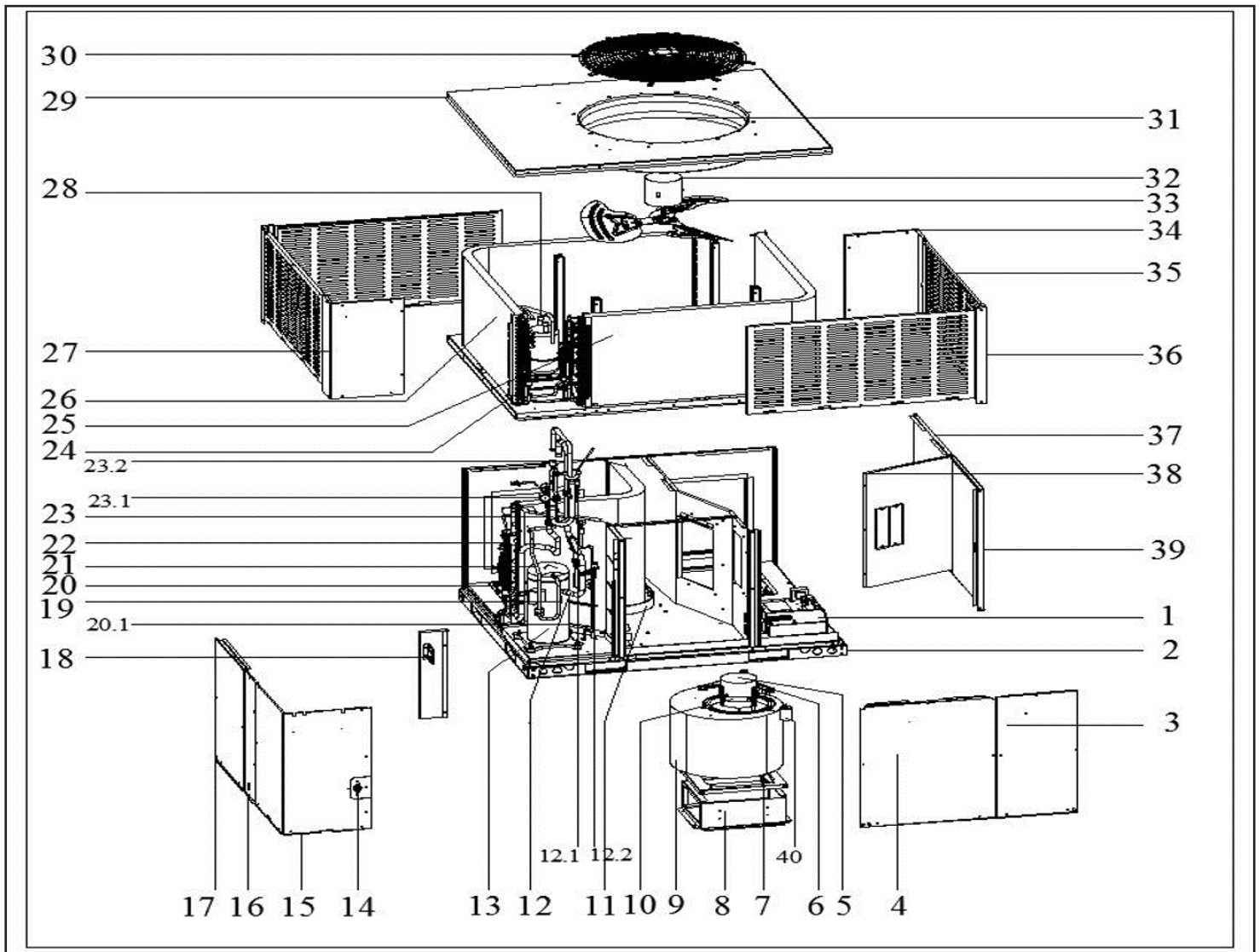

Comfort-Cire® **Century**®
SE Series

Heat Pump Packaged Unit

RHP6000S1A
Parts List



MARS®



Electric Gas Packaged Unit

RHP6000S1A Parts List

| EX_ID | Spare Parts Code | Part Name(EN) | Qty. | Recommend store spare parts |
|-------|------------------|--|------|-----------------------------|
| 1 | 17227700001238 | E-part box assembly | 1 | |
| 1.1 | 17127700000970 | Main control board assembly | 1 | YES |
| 1.1.1 | 11203001001353 | Fuse | 1 | YES |
| 1.2 | 11203103000194 | Linear Transformer | 1 | YES |
| 1.3 | 11203502000032 | AC contactor | 1 | YES |
| 1.4 | 12227700006629 | Electrical appliance mounting plate assembly | 1 | |
| 1.5 | 17400401000196 | Wire joint, 8P | 1 | |
| 1.6 | 17400103000151 | Capacitor | 1 | |
| 1.7 | 17400103000133 | Capacitor | 1 | |
| 2 | 12227700A07357 | Chassis part | 1 | |
| 3 | 12227700009002 | Internal panel assembly | 1 | |
| 4 | 12227700A07367 | Internal panel assembly | 1 | |
| 6 | 12223000001932 | Supporter subassembly of fan motor | 3 | |
| 7 | 12227700006164 | Wind wheel fixed plate | 1 | |
| 8 | 12227700006171 | Fan support board | 1 | |
| 9 | 12200101000213 | Wind turbine parts | 1 | YES |
| 10 | 12223000001992 | Supporter of fan motor | 1 | |
| 11 | 12127700000097 | Drainage pan assembly | 1 | YES |
| 12 | 15427700002011 | Suction pipe assembly | 1 | |
| 12.1 | 15427000001439 | Fusible plug assembly | 1 | |
| 12.2 | 17400516000089 | Pressure switch | 1 | YES |
| 13 | 11102010000369 | Fixed Speed Scroll compressor | 1 | YES |
| 14 | 11201007000025 | Room Temperature Sensor | 1 | YES |
| 15 | 12227700A07301 | Panel | 1 | |
| 16 | 12227700A07376 | Column assembly | 1 | |
| 17 | 12227700A07372 | Internal panel assembly | 1 | |
| 18 | 12227700008912 | Installation board | 1 | YES |
| 19 | 17400513000070 | Discharge Temp. sensor | 1 | YES |
| 20 | 15427700002292 | Throttle assembly | 1 | YES |
| 20.1 | 15500210004410 | Two-way throttle valve | 1 | YES |
| 21 | 15427700001991 | Air discharge pipe assembly | 1 | |
| 22 | 15827700001189 | Evaporator assembly | 1 | YES |
| 23 | 15427700002010 | Four-way valve assembly | 1 | YES |
| 23.1 | 15500216000084 | 4-way valve | 1 | YES |
| 23.2 | 174005160000101 | Pressure switch | 1 | YES |
| 24 | 11201007000412 | Pipe Temperature Sensor | 1 | YES |
| 25 | 15827700000712 | B unit condenser assembly | 1 | YES |
| 26 | 15827700000708 | B unit condenser assembly | 1 | YES |
| 27 | 12227700A07348 | Column assembly | 1 | |
| 28 | 15500508000082 | Accumulator cylinder | 1 | |
| 29 | 12227700010180 | Top cover welding assembly | 1 | |
| 30 | 12927700000301 | protection net | 1 | |
| 32 | 11002012028483 | Single Phase Asynchronous Motor | 1 | YES |
| 33 | 12200104000122 | Axial fan | 1 | YES |
| 34 | 12227700A07314 | Column | 1 | |
| 35 | 12227700A07351 | Protective plate assembly | 4 | |
| 36 | 12227700006368 | Column | 2 | |
| 37 | 12227700009000 | Internal panel assembly | 1 | |
| 38 | 12227700006260 | Circuit board assembly duct | 1 | |
| 39 | 12227700009008 | Column assembly | 1 | |

Due to ongoing product improvements, specifications and dimensions are subject to change and correction without notice or incurring obligations. Determining the application and suitability for use of any product is the responsibility of the installer. Additionally, the installer is responsible for verifying dimensional data on the actual product prior to beginning any installation preparations.

Incentive and rebate programs have precise requirements as to product performance and certification. All products meet applicable regulations in effect on date of manufacture; however, certifications are not necessarily granted for the life of a product. Therefore, it is the responsibility of the applicant to determine whether a specific model qualifies for these incentive/rebate programs.



1900 Wellworth Ave., Jackson, MI 49203 • Ph. 517-787-2100 • www.marsdelivers.com

